

Foam sensor for Rotavapor® R-300

Installation Guide

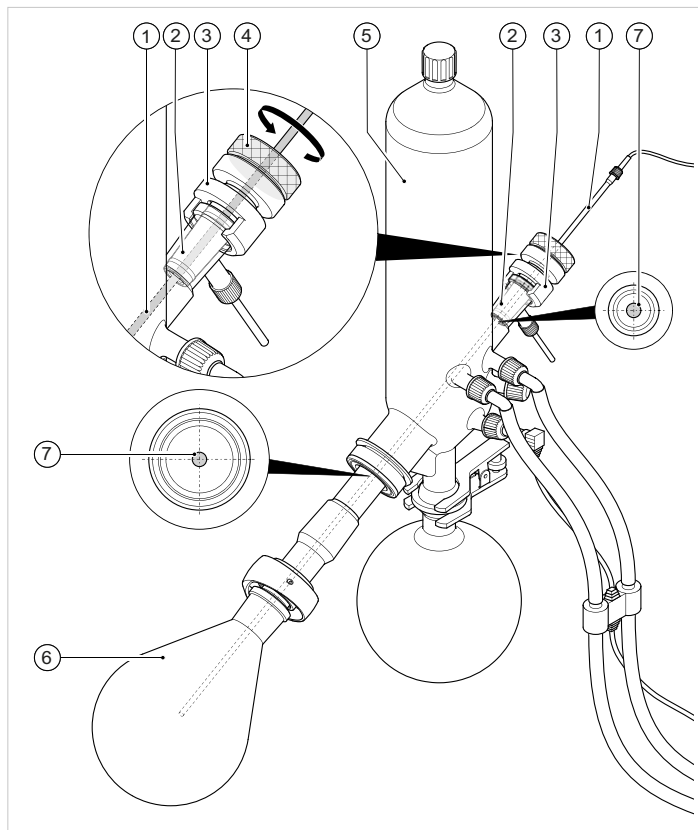
This Installation Guide is part of the Rotavapor® R-300 Operation Manual, chapter 5.11 „Fitting a foam sensor“. This Installation Guide can be downloaded from www.buchi.com in English, German, French, Italian, Spanish, Chinese and Japanese. The Russian version can be obtained from BUCHI Russia, e-mail: russia@buchi.com.

1. Scope of delivery

Product	Article number
Foam sensor for Rotavapor® R-300	11061167

2. Description

The foam sensor measures foam formation in the evaporating flask and emits a signal if the foam reaches the foam sensor. The foam is reduced by a short ventilation burst.



- | | |
|--------------------------|------------------------------------|
| ① Foam sensor | ⑤ Cooling condenser |
| ② Holder for foam sensor | ⑥ Evaporating flask |
| ③ Securing nut | ⑦ Foam sensor centrally positioned |
| ④ Clamp screw | |



IMPORTANT

Risk of damage to foam sensor from contact with glass components.

- When inserting the foam sensor, make sure that the sensor rod passes centrally through the components without touching.
- Use a vapor duct with a standard ground glass joint that is as large as possible (e.g. SJ 29/32).

3. Precondition

The distillation system includes an Interface I-300 / I-300 Pro and a VacuBox.

4. Installation

- ▶ Remove glass stopcock.
- ▶ Fit the tapered holder ② over the upper end of the foam sensor ①.
- ▶ Slide the clamp nut ③ onto the opening for the glass stopcock.
- ▶ Feed the foam sensor into the opening for the glass stopcock and through the vapor duct into the evaporating flask ⑥ of the Rotavapor R-300 and fix in place with the clamp nut ③. The tip of the foam sensor should be positioned approx. 4 to 5 cm below the ground neck of the evaporating flask.
- ▶ Align foam sensor centrally and fix in place with the clamp screw ④.
- ▶ Connect the communication cable from the foam sensor to the VacuBox. Plug the connector into the socket marked "FS".

BUCHI Affiliates:

Europe

<p>Switzerland/Austria</p> <p>BÜCHI Labortechnik AG CH – 9230 Flawil T +41 71 394 63 63 F +41 71 394 65 65 buchi@buchi.com www.buchi.com</p>	<p>Benelux</p> <p>BÜCHI Labortechnik GmbH Branch Office Benelux NL – 3342 GT Hendrik-Ido-Ambacht T +31 78 684 94 29 F +31 78 684 94 30 benelux@buchi.com www.buchi.be</p>	<p>France</p> <p>BUCHI Sarl FR – 94656 Rungis Cedex T +33 1 56 70 62 50 F +33 1 46 86 00 31 france@buchi.com www.buchi.fr</p>	<p>Germany</p> <p>BÜCHI Labortechnik GmbH DE – 45127 Essen T +800 414 0 414 0 (Toll Free) T +49 201 747 49 0 F +49 201 747 49 20 deutschland@buchi.com www.buechigmbh.de</p>
<p>Italy</p> <p>BUCHI Italia s.r.l. IT – 20010 Cornaredo (MI) T +39 02 824 50 11 F +39 02 575 12 855 italia@buchi.com www.buchi.it</p>	<p>Russia</p> <p>BUCHI Russia/CIS Russia 127287 Moscow T +7 495 36 36 495 F +7 495 98 10 520 russia@buchi.com www.buchi.ru</p>	<p>United Kingdom</p> <p>BUCHI UK Ltd. GB – Oldham OL9 9QL T +44 161 633 1000 F +44 161 633 1007 uk@buchi.com www.buchi.co.uk</p>	<p>Germany</p> <p>BÜCHI NIR-Online DE – 69190 Walldorf T +49 6227 73 26 60 F +49 6227 73 26 70 nir-online@buchi.com www.nir-online.de</p>

America

<p>Brazil</p> <p>BUCHI Brasil Ltda. BR – Valinhos SP 13271-200 T +55 19 3849 1201 F +55 19 3849 2907 brasil@buchi.com www.buchi.com</p>	<p>USA/Canada</p> <p>BUCHI Corporation US – New Castle, DE 19720 T +1 877 692 8244 (Toll Free) T +1 302 652 3000 F +1 302 652 8777 us-sales@buchi.com www.mybuchi.com</p>
--	--

Asia

<p>China</p> <p>BUCHI China CN – 200052 Shanghai T +86 21 6280 3366 F +86 21 5230 8821 china@buchi.com www.buchi.com.cn</p>	<p>India</p> <p>BUCHI India Private Ltd. IN – Mumbai 400 055 T +91 22 667 75400 F +91 22 667 18986 india@buchi.com www.buchi.in</p>	<p>Indonesia</p> <p>PT. BUCHI Indonesia ID – Tangerang 15321 T +62 21 537 62 16 F +62 21 537 62 17 indonesia@buchi.com www.buchi.co.id</p>	<p>Japan</p> <p>Nihon BUCHI K.K. JP – Tokyo 110-0008 T +81 3 3821 4777 F +81 3 3821 4555 nihon@buchi.com www.nihon-buchi.jp</p>
<p>Korea</p> <p>BUCHI Korea Inc. KR – Seoul 153-782 T +82 2 6718 7500 F +82 2 6718 7599 korea@buchi.com www.buchi.kr</p>	<p>Malaysia</p> <p>BUCHI Malaysia Sdn. Bhd. MY – 47301 Petaling Jaya, Selangor T +60 3 7832 0310 F +60 3 7832 0309 malaysia@buchi.com www.buchi.com</p>	<p>Singapore</p> <p>BUCHI Singapore Pte. Ltd. SG – Singapore 609919 T +65 6565 1175 F +65 6566 7047 singapore@buchi.com www.buchi.com</p>	<p>Thailand</p> <p>BUCHI (Thailand) Ltd. TH – Bangkok 10600 T +66 2 862 08 51 F +66 2 862 08 54 thailand@buchi.com www.buchi.co.th</p>

BUCHI Support Centers:

<p>South East Asia</p> <p>BUCHI (Thailand) Ltd. TH-Bangkok 10600 T +66 2 862 08 51 F +66 2 862 08 54 bacc@buchi.com www.buchi.com</p>	<p>Middle East</p> <p>BÜCHI Labortechnik AG UAE – Dubai T +971 4 313 2860 F +971 4 313 2861 middleeast@buchi.com www.buchi.com</p>	<p>Latin America</p> <p>BUCHI Latinoamérica Ltda. BR – Valinhos SP 13271-200 T +55 19 3849 1201 F +55 19 3849 2907 latinoamerica@buchi.com www.buchi.com</p>
--	---	---

We are represented by more than 100 distribution partners worldwide.
Find your local representative at: www.buchi.com